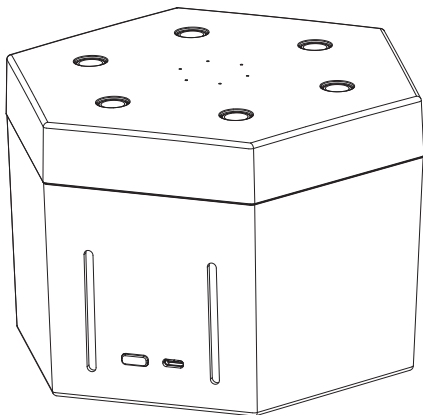
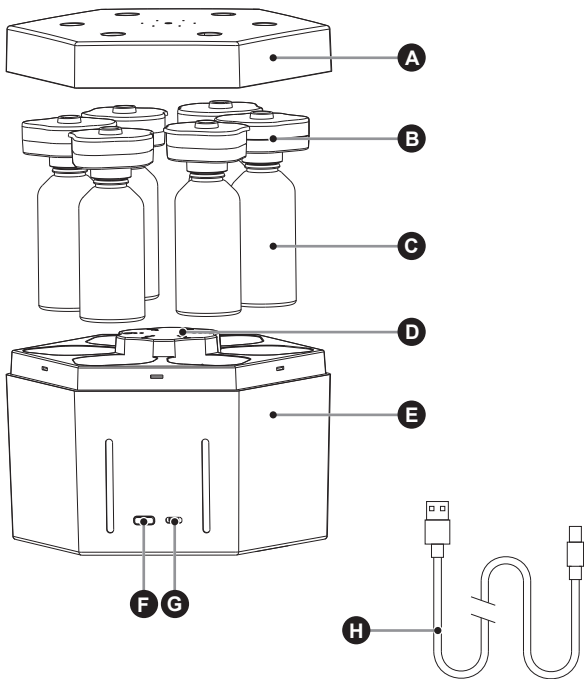


6 Scents Atomizer User Manual



Read Instruction manual carefully before use

PRODUCT DIAGRAM



A. Top cover

B. Atomizing head

C. Essential oil bottle

D. Spraying indicator

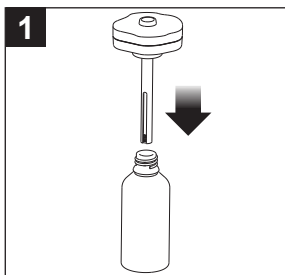
E. Main body

F. Power button

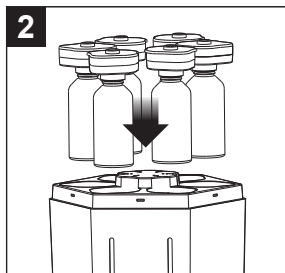
G. Power jack

H. Type-C cable

OPERATION



Rotate and install scent bottle as instructed by app.



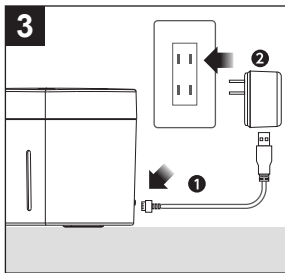
Place the installed atomizing head vertically into the corresponding six spouts of the atomizer, each spout marked with the corresponding number 1–6.



When putting the essential oil bottles into the equipment, align with the metal contact.



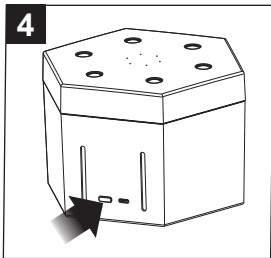
To prevent the risk of oil leaking, avoid tilting and reversing the atomizing head.



Plug the power cord into the main unit, then plug the USB cord into the home electrical outlet.



Use the standard original power adapter included in the box.

4


Connecting the adapter to the atomizer

1. Hold and press the power on button for 2 seconds, until the red light starts to blink.
2. Open the GameScent app and click on **“START SCANNING.”**
3. Select the device name with the prefix **“Adapter_”** from the app. *(If connection is successful, the right light will stop blinking and stay on)*
4. Select the WiFi network and enter the WiFi password.

5. When the green light goes on, the adapter is connected to the WiFi network. *(At present, the adapter has completed the distribution network process. Complete the distribution network of the atomizer as soon as possible.)*
6. Plug the atomizer into a power outlet.
7. Hold and press the power on button for 2 seconds, until the LED light starts to blink.
8. Click **“START SCANNING”** in the app.
9. Select the device name with the prefix **“Atomimzer_”** from the app.
10. Select the WiFi network and enter the WiFi password.

Deconnecting the adapter to the atomizer

First, make sure that the adapter and the atomizer are powered on and online.

1. In the app, click  → **Configure Device** to check the devices information.
2. Click **“UNBIND DEVICE”**
3. Select the device name with the prefix **“Adapter_”** from the app. *(If the connection is successful, the right light will stop blinking and stay on)*

Clearing the WiFi information

1. Plug a 5V power supply into the adapter.
2. Hold and press the “power on” button for 2 seconds.
3. Press the “power on” button 3 times in 5 seconds.
4. **For adapter:** WiFi light (green) will not light up, (red) will blink.
For atomizer: LED will blink.

The operation steps of the adapter and atomizer are the same.

PRECAUTIONS

If you do not plan to use the diffuser for an extended period, it is advisable to remove the bottle containing the essential oil and store the remaining oil.

- Ensure the spray head is thoroughly cleaned. Keep the diffuser in a dry environment.
- If there are no essential oils in the device, the device will not shut down automatically, requiring it to be turned off manually.
- Please note of spray intensity and be aware that slight variations are normal.
- The fog effect may be influenced by different factors such as the type of essential oils used, humidity levels, temperature, and indoor airflow.
- Prior to switching to a different essential oil, please ensure that the product is properly cleaned.

DISCLAIMER

In order to avoid damaging the product, please follow the necessary guidelines listed below:

- Do not allow non-approved staff to transform, disassemble, or repair the product. If the product needs to be repaired, please contact our sales department.
- Do not puncture, stab, twist, or stretch the line of the power adaptor. Do not place the electrical wire in ear or in a high-temperature location. Do not put heavy items or put pressure on the wire. Clipping or repair of the wire are also not be allowed.
- If the adaptor wire is damaged or the socket is loose, please stop using.
- If there is an abnormal odor, noise, abnormal generation, then the product or the adaptor may be at fault. Please pull the adaptor out of the supply socket, and stop using at the same time.
- Do not place the adaptor into water or any liquid material.
- Do not set the adaptor in or near a wet location, such as a bathroom, kitchen, sauna, etc.
- To maintain proper function, remove the essential oil bottles and use a cloth to wipe them clean, after every use.
- Scent oils may cause staining. If there is an accidental spill-out, use a dish cloth to wipe it immediately.
- Do not let the spray nozzle spray directly onto furniture, clothes, or walls.
- Avoid indirect sunlight. Do not place near an air conditioner, fan, or high temperature location.
- Place on a flat surface. Do not place on a soft surface, like a rug or pillow.
- Do not place on any appliances such as a microwave, television, or audio equipment.
- Do not cover the mist outlet. Impeding, blocking or covering the mist outlet will result in oil restriction and damage.
- After extended use, product should be turned off for a few hours.
- Do not touch the product while your hands are wet. May cause electric shock.
- Place out of reach from children.

PLEASE NOTE: *It is recommended to read the user manual in order to safely operate this product.*

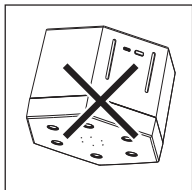
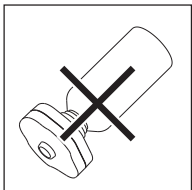
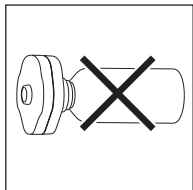
CLEANING AND MAINTENANCE

This product is a diffuser using a microporous atomizer tablet. Blockage of the atomizer is normal and won't affect the use of the product. However, when you clean it, please use non-woven fabric, not regular tissue or paper towel.

Every 5–6 uses or 3–5 days, please clean the product as follows:

1. Turn off the power, unplug the power cord and remove the spray head.
2. Unscrew the essential oil bottle from the spray head.
3. Dilute a small amount of kitchen detergent into warm water, and then wipe the product with a rag.
4. If you find dirt or foreign matter in the straw, please remove the straw and clean it.
5. If you need to change the essential oil with another flavor, please clean the spray head first.

ACCIDENTAL ROLLOVER AND METHOD OF DISPOSAL



If you accidentally roll over during use, please handle it as follows:

1. Unplug the power adapter and DC plug from the socket to make the product in a power-off state.
2. Unscrew the remaining essential oil from the spray head.
3. Take a little diluted detergent and wipe the essential oil on the body and spray head with toilet paper or sanitary napkin. After cleaning, put it in a safe place and let it dry naturally.

TROUBLESHOOTING

If the product does not work properly, please refer to the following conditions:

When it can't diffuse normally:

Check to see if the nebulizer is loose.

If it is loose, put your fingers near to the nebulizer to feel if there is airflow coming out.

When the essential oil is leaking:

Check if scent bottle cap is screwed on tight

Try to re-tighten again and wipe oil on the surface of the bottle.

Check if the machine has been placed upside down

Turn off machine and take off the nebulizer with the bottle and wash the nebulizer. Wipe off oil on the nebulizer and bottle.

Please refer to **“Accidental rollover and method of disposal”**

Product Specification

Product size: 186x161.6x124mm

Input voltage: USB 5V

Rated power: 5W

Product weight: About 1kg

Raw materials: PP+POM

Accessories: Type C cable, user manual, 5V/1A power adapter

This product cannot be discarded as domestic waste and should be recycled according to the garbage classification. Proper disposal and recycling help protect natural resources, human health and the environment.



FCC Caution:

This device complies with part 15 of the FCC Rules. Operation is subject to the following two conditions: (1) this device may not cause harmful interference, and (2) this device must accept any interference received, including interference that may cause undesired operation.

Any changes or modifications not expressly approved by the party responsible for compliance could void the user's authority to operate the equipment.

NOTE: This equipment has been tested and found to comply with the limits for a Class B digital device, pursuant to Part 15 of the FCC Rules. These limits are designed to provide reasonable protection against harmful interference in a residential installation. This equipment generates, uses and can radiate radio frequency energy and, if not installed and used in accordance with the instructions, may cause harmful interference to radio communications. However, there is no guarantee that interference will not occur in a particular installation.

If this equipment does cause harmful interference to radio or television reception, which can be determined by turning the equipment off and on, the user is encouraged to try to correct the interference by one or more of the following measures:

- Reorient or relocate the receiving antenna.
- Increase the separation between the equipment and receiver.
- Connect the equipment into an outlet on a circuit different from that to which the receiver is connected.
- Consult the dealer or an experienced radio/TV technician for help.

To maintain compliance with FCC's RF Exposure guidelines, This equipment should be installed and operated with minimum distance 20cm between the radiator and your body: Use only the supplied antenna.

IC Caution:

RSS-Gen Issue 5 "8" RSS-Gen numéro 5

English:

This device contains licence-exempt transmitter(s)/receiver(s) that comply with Innovation, Science and Economic Development Canada's licence-exempt RSS(s). Operation is subject to the following two conditions:

- (1) This device may not cause interference.
- (2) This device must accept any interference, including interference that may cause undesired operation of the device.

Any changes or modifications not expressly approved by the party responsible for compliance could void the user's authority to operate the equipment.

RF exposure statement:

The equipment complies with IC Radiation exposure limit set forth for uncontrolled environment. This equipment should be installed and operated with minimum distance 20cm between the radiator and your body.

French:

Cet appareil contient des émetteurs / récepteurs exemptés de licence conformes aux RSS (RSS) d'Innovation, Sciences et Développement économique Canada. Le fonctionnement est soumis aux deux conditions suivantes:

- (1) Cet appareil ne doit pas causer d'interférences.
- (2) Cet appareil doit accepter toutes les interférences, y compris celles susceptibles de provoquer un fonctionnement indésirable de l'appareil.

Tout changement ou modification non expressément approuvé par la partie responsable de la conformité pourrait annuler l'autorité de l'utilisateur à utiliser l'équipement.

Déclaration d'exposition RF:

L'équipement est conforme à la limite d'exposition aux radiations de la IC établie pour un environnement non contrôlé. Cet équipement doit être installé et utilisé avec une distance minimale de 20cm entre le radiateur et votre corps.

FCC Caution:

This device complies with part 15 of the FCC Rules. Operation is subject to the following two conditions: (1) this device may not cause harmful interference, and (2) this device must accept any interference received, including interference that may cause undesired operation.

Any changes or modifications not expressly approved by the party responsible for compliance could void the user's authority to operate the equipment.

NOTE: This equipment has been tested and found to comply with the limits for a Class B digital device, pursuant to Part 15 of the FCC Rules. These limits are designed to provide reasonable protection against harmful interference in a residential installation. This equipment generates, uses and can radiate radio frequency energy and, if not installed and used in accordance with the instructions, may cause harmful interference to radio communications. However, there is no guarantee that interference will not occur in a particular installation.

If this equipment does cause harmful interference to radio or television reception, which can be determined by turning the equipment off and on, the user is encouraged to try to correct the interference by one or more of the following measures:

- Reorient or relocate the receiving antenna.
- Increase the separation between the equipment and receiver.
- Connect the equipment into an outlet on a circuit different from that to which the receiver is connected.
- Consult the dealer or an experienced radio/TV technician for help.

To maintain compliance with FCC's RF Exposure guidelines, This equipment should be installed and operated with minimum distance 20cm between the radiator and your body: Use only the supplied antenna.

IC Caution:

RSS-Gen Issue 5 "8" RSS-Gen numéro 5

English:

This device contains licence-exempt transmitter(s)/receiver(s) that comply with Innovation, Science and Economic Development Canada's licence-exempt RSS(s). Operation is subject to the following two conditions:

- (1) This device may not cause interference.
- (2) This device must accept any interference, including interference that may cause undesired operation of the device.

Any changes or modifications not expressly approved by the party responsible for compliance could void the user's authority to operate the equipment.

RF exposure statement:

The equipment complies with IC Radiation exposure limit set forth for uncontrolled environment. This equipment should be installed and operated with minimum distance 20cm between the radiator and your body.

French:

Cet appareil contient des émetteurs / récepteurs exemptés de licence conformes aux RSS (RSS) d'Innovation, Sciences et Développement économique Canada. Le fonctionnement est soumis aux deux conditions suivantes:

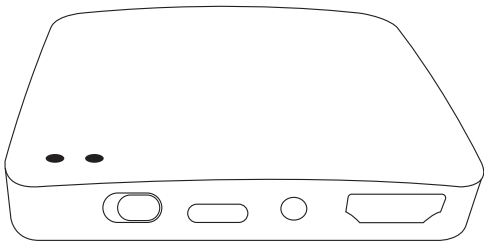
- (1) Cet appareil ne doit pas causer d'interférences.
- (2) Cet appareil doit accepter toutes les interférences, y compris celles susceptibles de provoquer un fonctionnement indésirable de l'appareil.

Tout changement ou modification non expressément approuvé par la partie responsable de la conformité pourrait annuler l'autorité de l'utilisateur à utiliser l'équipement.

Déclaration d'exposition RF:

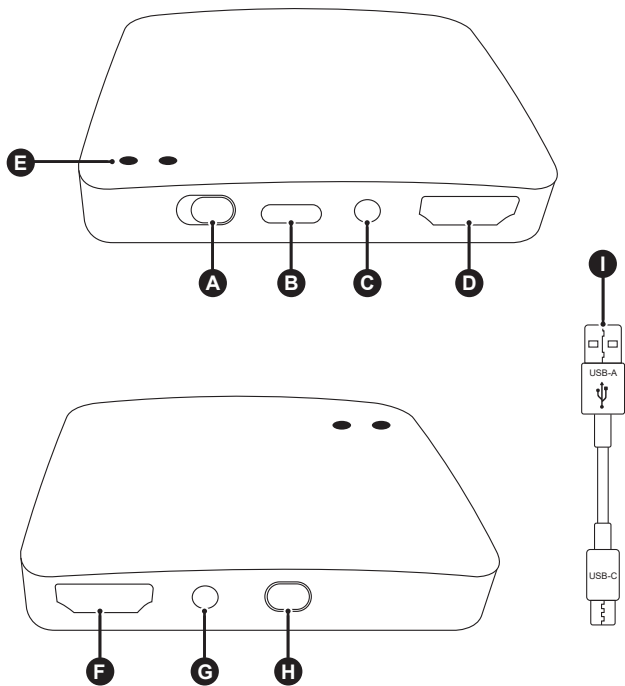
L'équipement est conforme à la limite d'exposition aux radiations de la IC établie pour un environnement non contrôlé. Cet équipement doit être installé et utilisé avec une distance minimale de 20cm entre le radiateur et votre corps.

Adaptor User Manual



Read Instruction manual carefully before use

PRODUCT DIAGRAM



A. Switch
B. DC
C. Audio In

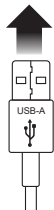
D. HDMI In
E. Indicator lights
F. HDMI out

G. Audio out
H. WiFi on/off
I. USB-A to USB-C

OPERATION

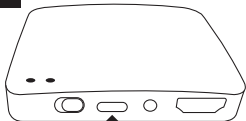
1

PC/Game
Console/TV

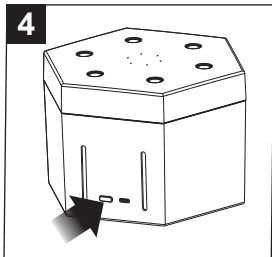


Power by USB from
pc/game console/tv

2



Plug USB-C into adaptor

4


Connecting the adapter to the atomizer

1. Hold and press the power on button for 2 seconds, until the red light starts to blink.
2. Open the GameScent app and click on **“START SCANNING.”**
3. Select the device name with the prefix **“Adapter_”** from the app. *(If the connection is successful, the right light will stop blinking and stay on)*
4. Select the WiFi network and enter the WiFi password.

5. When the green light goes on, the adapter is connected to the WiFi network. *(At present, the adapter has completed the distribution network process. Complete the distribution network of the atomizer as soon as possible.)*
6. Plug the atomizer into a power outlet.
7. Hold and press the power on button for 2 seconds, until the LED light starts to blink.
8. Click **“START SCANNING”** in the app.
9. Select the device name with the prefix **“Atomimzer_”** from the app.
10. Select the WiFi network and enter the WiFi password.

Deconnecting the adapter to the atomizer

First, make sure that the adapter and the atomizer are powered on and online.

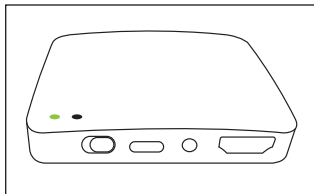
1. In the app, click  → **Configure Device** to check the devices information.
2. Click **“UNBIND DEVICE”**
3. Select the device name with the prefix **“Adapter_”** from the app. *(If the connection is successful, the right light will stop blinking and stay on)*

Clearing the WiFi information

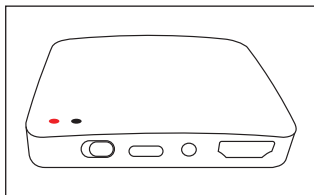
1. Plug a 5V power supply into the adapter.
2. Hold and press the “power on” button for 2 seconds.
3. Press the “power on” button 3 times in 5 seconds.
4. **For adapter:** WiFi light (green) will not light up, (red) will blink.
For atomizer: LED will blink.

The operation steps of the adpater and atomizer are the same.

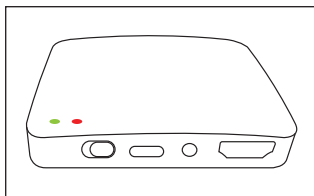
Indicator Lights



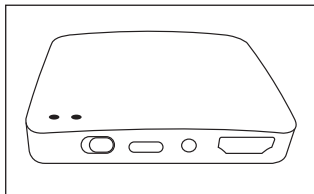
WiFi **GREEN LED** on



RED LED on



Both **GREEN & RED LED** on



Both **GREEN & RED LED** off

PRECAUTIONS

If you do not plan to use the diffuser for an extended period, it is advisable to remove the bottle containing the essential oil and store the remaining oil.

- Ensure the spray head is thoroughly cleaned. Keep the diffuser in a dry environment.
- If there are no essential oils in the device, the device will not shut down automatically, requiring it to be turned off manually.
- Please note of spray intensity and be aware that slight variations are normal.
- The fog effect may be influenced by different factors such as the type of essential oils used, humidity levels, temperature, and indoor airflow.
- Prior to switching to a different essential oil, please ensure that the product is properly cleaned.

DISCLAIMER

In order to avoid damaging the product, please follow the necessary guidelines listed below:

- Do not allow non-approved staff to transform, disassemble, or repair the product. If the product needs to be repaired, please contact our sales department.
- Do not puncture, stab, twist, or stretch the line of the power adaptor. Do not place the electrical wire in ear or in a high-temperature location. Do not put heavy items or put pressure on the wire. Clipping or repair of the wire are also not be allowed.
- If the adaptor wire is damaged or the socket is loose, please stop using.
- If there is an abnormal odor, noise, abnormal generation, then the product or the adaptor may be at fault. Please pull the adaptor out of the supply socket, and stop using at the same time.
- Do not place the adaptor into water or any liquid material.
- Do not set the adaptor in or near a wet location, such as a bathroom, kitchen, sauna, etc.
- To maintain proper function, remove the essential oil bottles and use a cloth to wipe them clean, after every use.
- Scent oils may cause staining. If there is an accidental spill-out, use a dish cloth to wipe it immediately.
- Do not let the spray nozzle spray directly onto furniture, clothes, or walls.
- Avoid indirect sunlight. Do not place near an air conditioner, fan, or high temperature location.
- Place on a flat surface. Do not place on a soft surface, like a rug or pillow.
- Do not place on any appliances such as a microwave, television, or audio equipment.
- Do not cover the mist outlet. Impeding, blocking or covering the mist outlet will result in oil restriction and damage.
- After extended use, product should be turned off for a few hours.
- Do not touch the product while your hands are wet. May cause electric shock.
- Place out of reach from children.

PLEASE NOTE: *It is recommended to read the user manual in order to safely operate this product.*

FCC Caution:

This device complies with part 15 of the FCC Rules. Operation is subject to the following two conditions: (1) this device may not cause harmful interference, and (2) this device must accept any interference received, including interference that may cause undesired operation.

Any changes or modifications not expressly approved by the party responsible for compliance could void the user's authority to operate the equipment.

NOTE: This equipment has been tested and found to comply with the limits for a Class B digital device, pursuant to Part 15 of the FCC Rules. These limits are designed to provide reasonable protection against harmful interference in a residential installation. This equipment generates, uses and can radiate radio frequency energy and, if not installed and used in accordance with the instructions, may cause harmful interference to radio communications. However, there is no guarantee that interference will not occur in a particular installation.

If this equipment does cause harmful interference to radio or television reception, which can be determined by turning the equipment off and on, the user is encouraged to try to correct the interference by one or more of the following measures:

- Reorient or relocate the receiving antenna.
- Increase the separation between the equipment and receiver.
- Connect the equipment into an outlet on a circuit different from that to which the receiver is connected.
- Consult the dealer or an experienced radio/TV technician for help.

To maintain compliance with FCC's RF Exposure guidelines, This equipment should be installed and operated with minimum distance 20cm between the radiator and your body: Use only the supplied antenna.

IC Caution:

RSS-Gen Issue 5 "&" RSS-Gen numéro 5

English:

This device contains licence-exempt transmitter(s)/receiver(s) that comply with Innovation, Science and Economic Development Canada's licence-exempt RSS(s). Operation is subject to the following two conditions:

- (1) This device may not cause interference.
- (2) This device must accept any interference, including interference that may cause undesired operation of the device.

Any changes or modifications not expressly approved by the party responsible for compliance could void the user's authority to operate the equipment.

RF exposure statement:

The equipment complies with IC Radiation exposure limit set forth for uncontrolled environment. This equipment should be installed and operated with minimum distance 20cm between the radiator and your body.

French:

Cet appareil contient des émetteurs / récepteurs exemptés de licence conformes aux RSS (RSS) d'Innovation, Sciences et Développement économique Canada. Le fonctionnement est soumis aux deux conditions suivantes:

- (1) Cet appareil ne doit pas causer d'interférences.
- (2) Cet appareil doit accepter toutes les interférences, y compris celles de provoquer un fonctionnement indésirable de l'appareil.

Tout changement ou modification non expressément approuvé par la partie responsable de la conformité pourrait annuler l'autorité de l'utilisateur à utiliser l'équipement.

Déclaration d'exposition RF:

L'équipement est conforme à la limite d'exposition aux radiations de la IC établie pour un environnement non contrôlé. Cet équipement doit être installé et utilisé avec une distance minimale de 20cm entre le radiateur et votre corps.

Product Specification

Product size: 73x69x15mm

Input voltage: 5V

Product weight: 50g

Raw materials: ABS

Accessories: Type C cable, HDMI cable, earphone cable, user manual

This product cannot be discarded as domestic waste and should be recycled according to the garbage classification. Proper disposal and recycling help protect natural resources, human health and the environment.



Made in China

MODEL NO. ADPT001 and ADPT001W